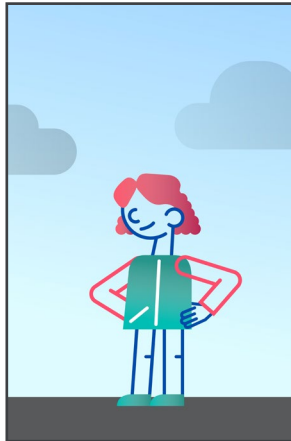
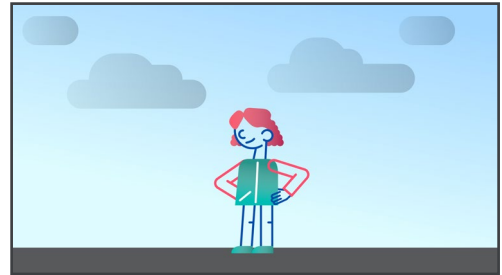


Aspect ratio

If filming on a tablet or phone, it's best not to switch between portrait (filming with the device upright) and landscape (filming with the device on its side). Keeping your device in landscape will produce the best results.



PORTRAIT



LANDSCAPE

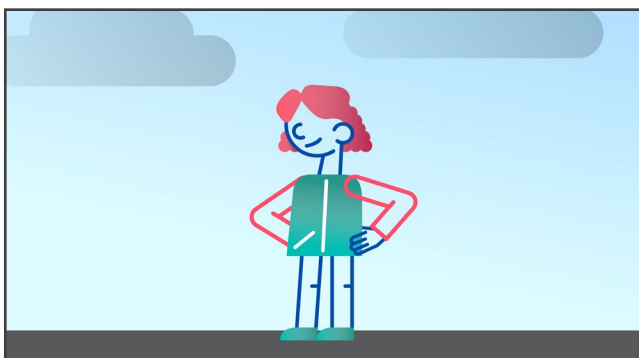
Camera positioning

Where is the best place to position the camera to get a clear shot?



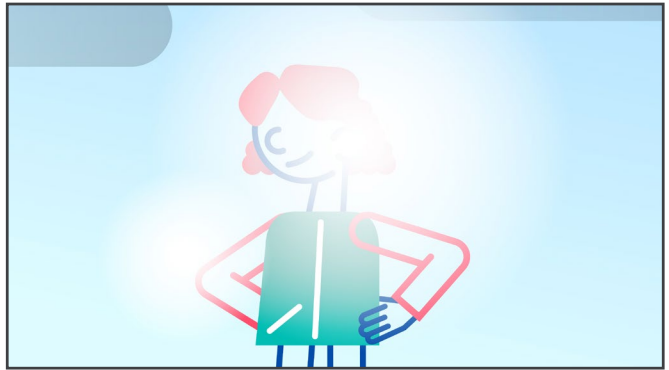
Camera framing

Would a long shot or close-up suit best for the activity you have in mind?



Lighting

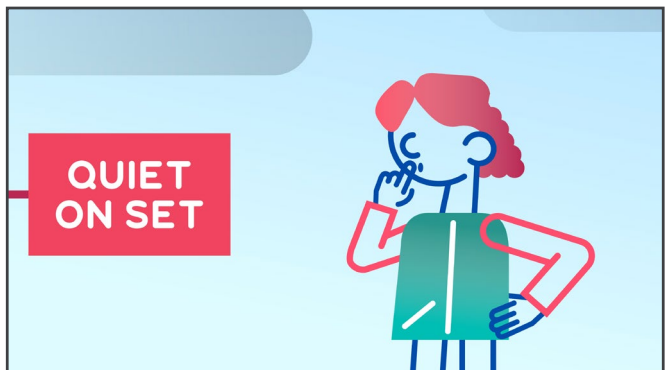
Are the people being filmed facing the light source rather than standing with their backs to it?



Sound

Have you chosen a suitable location to cut out background noise?

Is the mic close to the person who is speaking to camera?



Use of a tripod

If you are without access to a tripod, have you minimised camera shake with your elbows on a table, shelf or wall?

